

ISO/TS16949 REGISTERED
TB-064 • August 2018

Fontaine ARMOR™ cold weather maintenance

When the temperature drops below freezing, ice and sludge can build up while lubricants can become thick and binding. Special precautions should be taken during cold weather to ensure that fifth wheel locking mechanisms operate freely.

When low temperatures occur, Fontaine® Parts Connection suggests that the grease be removed from the fifth wheel (steam cleaning is preferred) and light weight lubricant applied. Follow safety precautions by disarming the fifth wheel before performing maintenance. It is especially important that the throat of the fifth wheel be cleaned and cleared of any and all debris (ice, snow, sludge, rock, etc.) that could prevent correct coupling. In addition, hardened grease should be removed from the grease grooves and angled surfaces of the wear plates.

Once the fifth wheel has been properly degreased, lubrication can be applied to critical areas of the fifth wheel. As the **red lines** **Figure 1** indicates, grease should be applied to the locking jaw and the stationary jaw as well as to the wear plates of a closed fifth wheel. Distribute the grease along the full length of the components.

From the underside of the wheel, grease should be applied to the areas indicated in **Figure 2**. Ensure all pivot points are greased and use grease fittings as applicable.

During cold weather, Fontaine recommends the use of a lightweight lubricant. Less viscous substance such as: 90-weight oil, diesel fuel, kerosene, motor oil, etc. Doing so will help ensure proper movement/ lubrication of the latching mechanism. Fontaine suggests contacting your specific lubricant manufacturer for guidelines on mixing compatibility of any lubricant. Fontaine recommends preventative fifth wheel maintenance every 500 hours during the winter months.

If an issue with cold weather maintenance has not been fully addressed by this technical bulletin, please contact Fontaine Parts Connection at 800.874.9780.

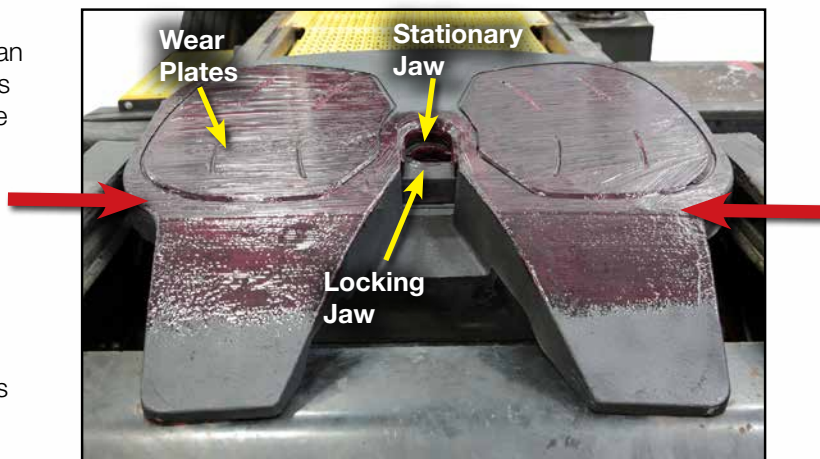


Figure 1: Top view, lubrication points of Fontaine Armor



Figure 2: Underside view, Lubrication points of Fontaine Armor