

ARMOR

THE ONLY FIFTH WHEEL DESIGNED SPECIFICALLY FOR YARD TRUCKS

Faster repairs • Greater uptime • Lowest total cost of ownership

Jaw Replacement Instructions

Jaw Replacement Kit (ARMORJRK)



Jaw Replacement Kit

Part # **ARMORJRK**

Standard Repair Time:

15 Minutes



Jaw Replacement Video available at:

fifthwheel.com/armor

Choose "Training" then "Jaw Replacement"

Item	Description	Quantity
②	Locking jaw	1

See video at fifthwheel.com/maintenance/
Choose "Jaw Replacement"



Locking Jaw

Tools Required

Crowbar
Pliers
3/4" deep well socket with 2" extension
11/16" socket
Kingpin tool

Personal Protective Equipment

Safety glasses
Work gloves
Steel toe boots



Warning!

- Keep hands away from throat of operating fifth wheel
- Wear Personal Protective Equipment (PPE)
- Make sure the wheel is disarmed before maintenance
- Follow all instructions
- Read operating manual before use
- Use proper procedures
- Use proper tools



For instructional video scan or go to fifthwheel.com/maintenance/



FONTAINE®

PARTS CONNECTION

fifthwheel.com • 800.874.9780

All kits include hardware

ARMOR

THE ONLY FIFTH WHEEL DESIGNED SPECIFICALLY FOR YARD TRUCKS

Faster repairs • Greater uptime • Lowest total cost of ownership

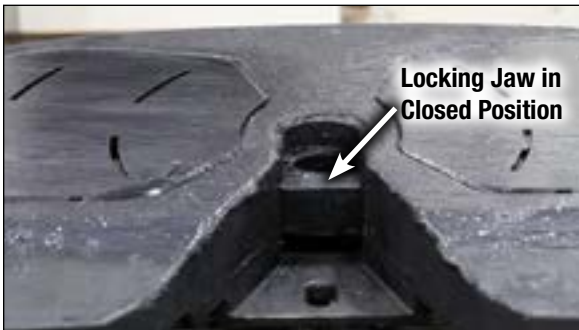
Disassembly

Hint: If you need help with parts identification see pages 6-8.

1



Trip the wheel closed using a crowbar. **NEVER use hands to trip an activated fifth wheel.**



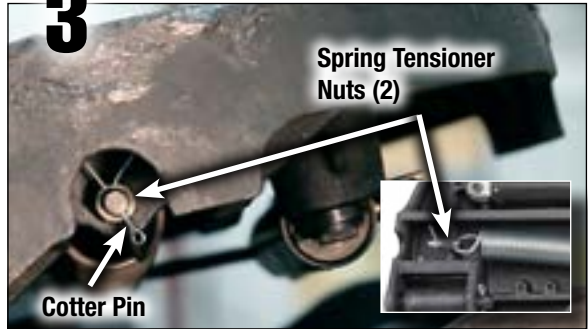
Hint: A fifth wheel is closed when the locking jaw is completely across the throat of the fifth wheel.

2



Raise the yard truck boom for easy access, then remove the air hose from the air cylinder quick release valve.

3

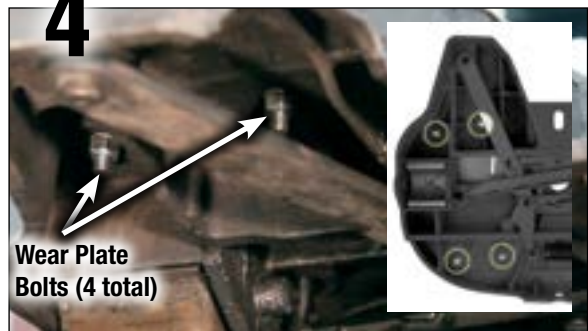


Remove spring tension by removing the cotter pin with pliers. Then remove the two spring tensioner nuts. **Hint:** You can place a screwdriver in the main spring loop to prevent spring from rotating when unbolting nuts (see video).



This deactivates the fifth wheel and allows the user to perform maintenance.

4



Tilt the top plate down to access the two front bolts from the opposite side of the top plate. Remove the four **left** wear plate nuts and washers. Note all four nut locations in photo.

ARMOR

THE ONLY FIFTH WHEEL DESIGNED SPECIFICALLY FOR YARD TRUCKS

Faster repairs • Greater uptime • Lowest total cost of ownership

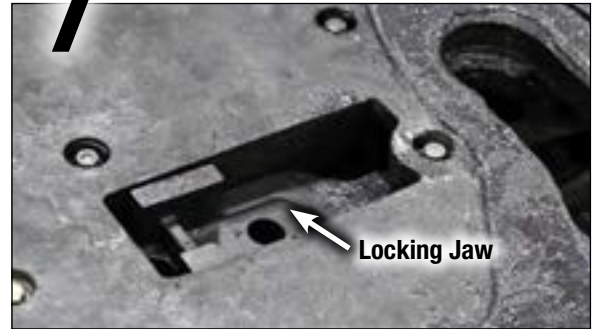
Disassembly

5



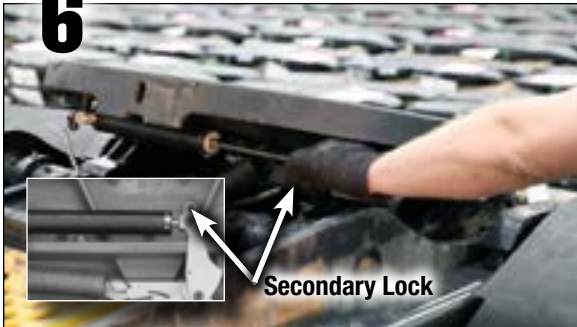
Remove left wear plate.

7



Notice locking jaw is now visible because wear plate is off and fifth wheel is in open position.

6



Pull the secondary lock to open the fifth wheel.



Pull the locking jaw out of the top surface of the wheel.

ARMOR

THE ONLY FIFTH WHEEL DESIGNED SPECIFICALLY FOR YARD TRUCKS

Faster repairs • Greater uptime • Lowest total cost of ownership

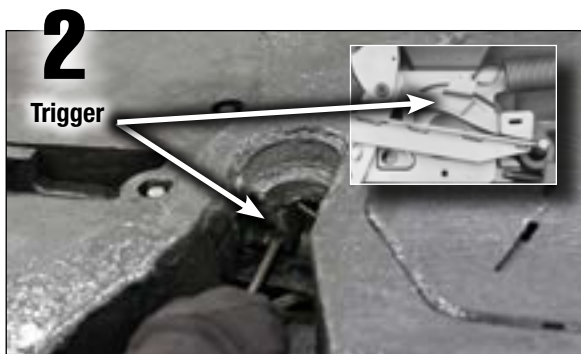
Assembly



Position the jaw pin into the slot of the operating handle.



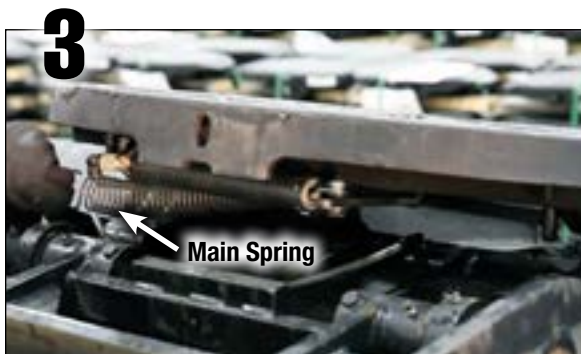
Install the left wear plate.



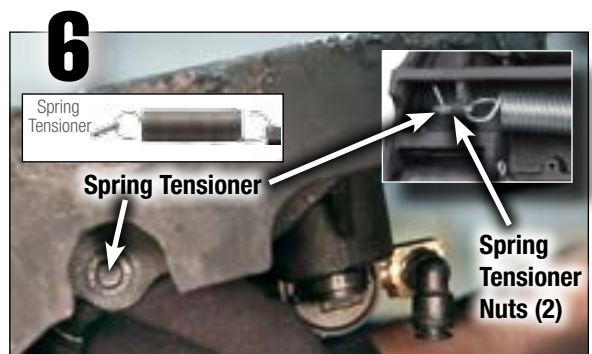
Trip the trigger off the stationary jaw stop. It pushes in.



Install the left wear plate nuts and washers. You can tilt fifth wheel up and down for easy access. Note all four bolt locations in photo.



Close the fifth wheel by pulling the main spring.



Insert the spring tensioner through the hole.

Install the TWO spring tensioner nuts. **Hint:** You can place a screwdriver in the main spring loop to prevent spring from rotating when bolting on nuts (see video).

ARMOR

THE ONLY FIFTH WHEEL DESIGNED SPECIFICALLY FOR YARD TRUCKS

Faster repairs • Greater uptime • Lowest total cost of ownership

Assembly

7



Install the cotter pin.

8



Connect the air hose to the air cylinder quick release valve.

9



Tilt the fifth wheel down and lower the yard truck boom.

Test the wheel using the Fontaine kingpin tool (ARMORKPK) by frequently opening and closing the fifth wheel (see video).

Test Kingpin Tool
Part # **ARMORKPK**

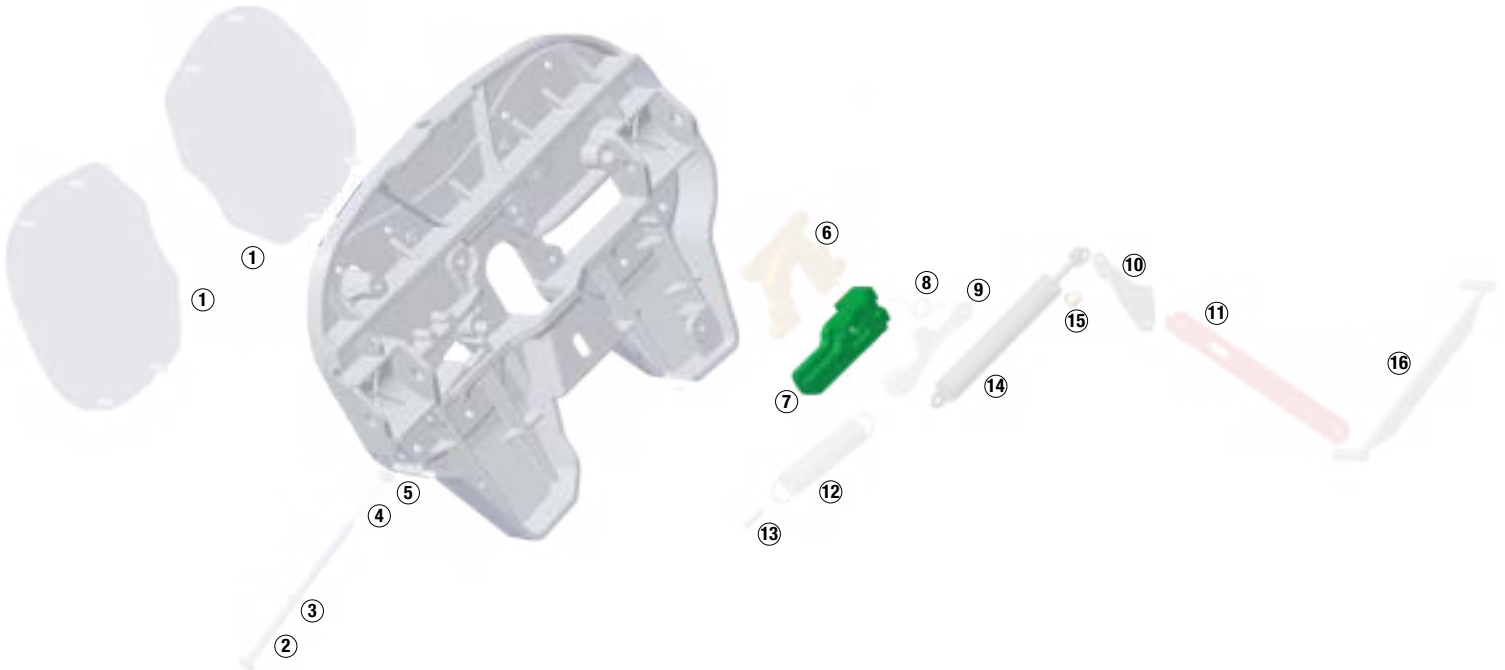


ARMOR

THE ONLY FIFTH WHEEL DESIGNED SPECIFICALLY FOR YARD TRUCKS

Faster repairs • Greater uptime • Lowest total cost of ownership

Part Identification



Item	Description	Quantity	Included in kit
①	Wear plate	2	ARMORWPK
②	Knockout rod	1	ARMORKRK
③	Knockout rod clip	1	ARMORKRK
④	Knockout rod spring	1	ARMORKRK
⑤	Knockout rod nut	1	ARMORKRK
⑥	Stationary jaw	1	ARMORSJK, ARMORLAK
⑦	Locking jaw	1	ARMORJRK, ARMORLAK
⑧	Torsion spring	1	ARMORTAK, ARMORLAK, ARMORSRK
⑨	Trigger	1	ARMORTAK, ARMORLAK
⑩	Secondary lock	1	ARMORTAK, ARMORLAK
⑪	Operating handle	1	ARMORTAK, ARMORLAK
⑫	Main spring	1	ARMORTAK, ARMORLAK, ARMORSRK
⑬	Spring tensioner	1	ARMORTAK, ARMORLAK, ARMORSRK
⑭	Air Cylinder	1	ARMORACK
⑮	3-way air valve	1	ARMORACK
⑯	Cover plate	1	ARMORTAK, ARMORLAK, ARMORCPK

See video at fifthwheel.com/maintenance/
Choose "Jaw Replacement"


FONTAINE[®]
 PARTS CONNECTION
fifthwheel.com • 800.874.9780

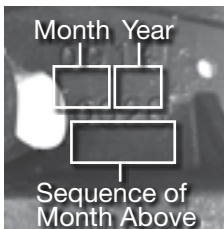
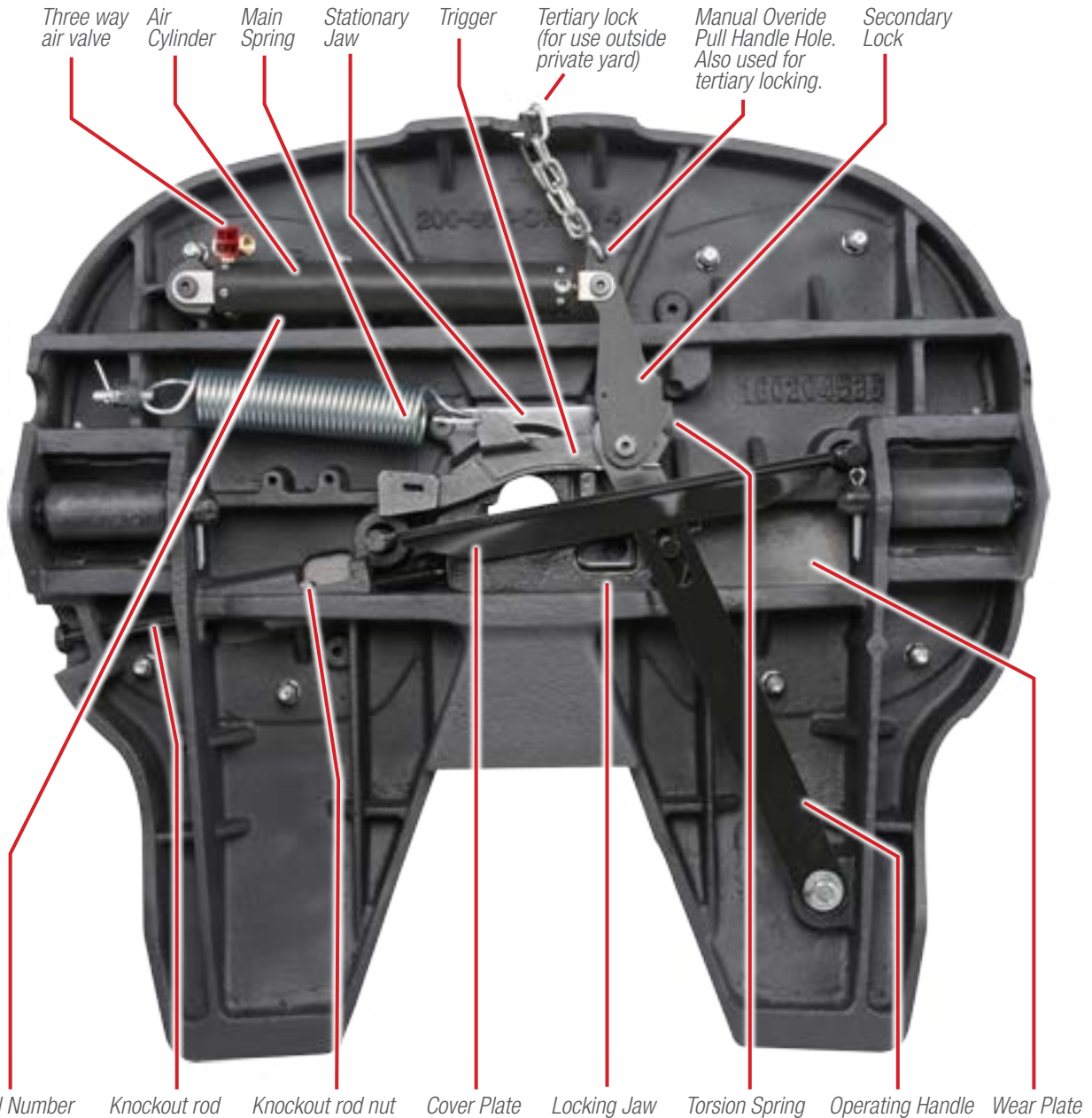
All kits include hardware

ARMOR

THE ONLY FIFTH WHEEL DESIGNED SPECIFICALLY FOR YARD TRUCKS

Faster repairs • Greater uptime • Lowest total cost of ownership

Part Identification – Bottom View



28th fifth wheel
manufactured in
September, 2014

Example serial number
09140028



FONTAINE[®]

PARTS CONNECTION

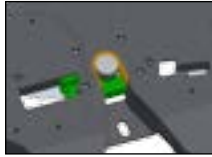
fifthwheel.com • 800.874.9780

ARMOR

THE ONLY FIFTH WHEEL DESIGNED SPECIFICALLY FOR YARD TRUCKS

Faster repairs • Greater uptime • Lowest total cost of ownership

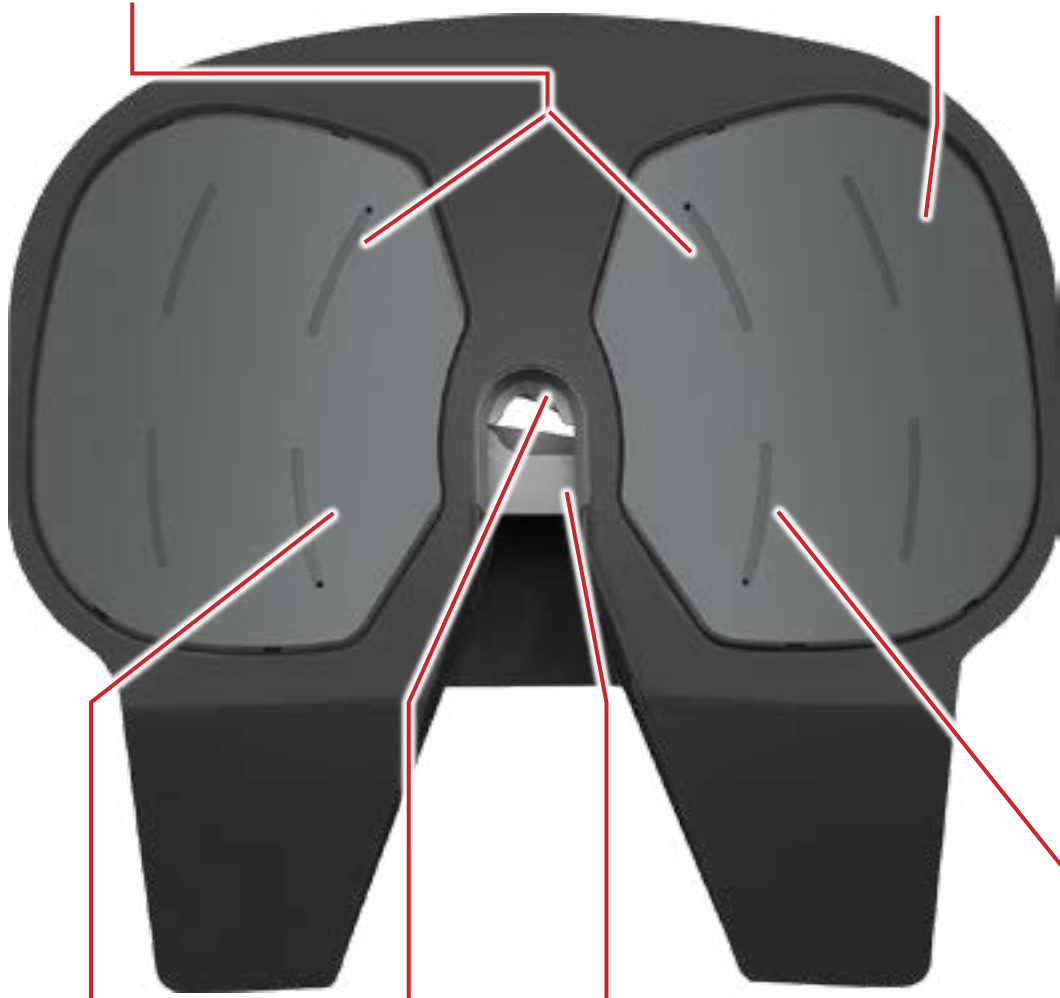
Part Identification – Top View



Wear Plates (removable for easy maintenance)



Air cylinder bolt access (under wear plate)



Locking jaw access (under wear plate). Locking jaw slides in for easy maintenance.



Stationary Jaw

Locking Jaw

Knockout rod access (under wear plate). Slot for easy knockout rod maintenance.



FONTAINE[®]

PARTS CONNECTION

fifthwheel.com • 800.874.9780